

ACCEPTED  
FOR REGISTRATION

DOC ID: 549674

April 18, 2017

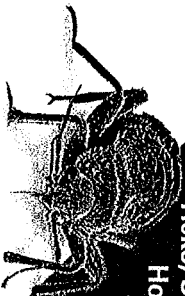
New York State  
of Environment  
Division of Marine  
Pesticide Products

# JT EATON™ KILLS BEDBUGS AND CRAWLING INSECTS POWDER™

**POLVO PARA MATAR CHINGHES Y  
INSECTOS DE AVANCE LENTO**  
For Control of Crawling Insects in Homes,  
Residential, Business and Commercial.  
FOR CONTROL OF FOOD INFESTING  
and NUISANCE INSECT PESTS

Ants, Bedbugs, Boxelder Bugs,  
Cockroaches, Crickets, Fleas, Silverfish,  
Ticks, Sowbugs, Millipedes and  
Houseflies resting on  
treated surfaces.

Mixed and  
Manufactured  
in the U.S.A.



**ACTIVE INGREDIENTS: 100%**  
Silicon Dioxide... 85%  
From diatomaceous earth... 10%  
Other Elemental Oxides... 5%  
Moisture... 100%  
TOTAL..... 100%

EPA REG. NO. 56-67 • EPA EST. NO. 35132-OH-1

NET WEIGHT 7 OZ. (198.45 gr)

Item #203

## FIRST AID

**IF IN EYES:** Hold eye open and rinse slowly and gently with water for 15 to 20 minutes. Remove contact lenses, if present, after 5 minutes, then continue rinsing. Call a Poison Control Center or doctor for treatment advice.  
**IF INHALED:** Move person to fresh air. If person is not breathing, call 911 or an ambulance, then give artificial respiration, preferably mouth to mouth if possible. Call a Poison Control Center or doctor for further treatment advice.

**HAVE THIS PRODUCT CONTAINER OR LABEL WITH YOU WHEN CALLING A POISON CONTROL CENTER OR DOCTOR, OR WHEN GOING FOR TREATMENT.**  
You may also call 1-800-222-1222 for emergency medical treatment advice.

## HAZARDS TO HUMANS AND DOMESTIC ANIMALS

**CAUTION:** Causes moderate eye irritation. Avoid contact with eyes. Use adequate ventilation and avoid breathing dust. For commercial and/or prolonged application wear a suitable dust mask approved by NIOSH/OSHA. (example: #TC-21C-132).

**PHYSICAL AND CHEMICAL HAZARDS**  
Keep container tightly closed. Product must remain completely dry to retain insecticidal values.

## DIRECTIONS FOR USE:

It is a violation of Federal law to use this product in a manner inconsistent with the labeling. **APPLY ONLY TO DRY SURFACES.** May be used by Pest Control Operators. Excess product may be removed by mop, sponge or dampened cloth. JT EATON™ KILLS BEDBUGS and CRAWLING INSECTS POWDER™ kills insects by absorbing the fluids right out of their body. Insects dry-up... and die!

**GENERAL DIRECTIONS:** JT EATON™ KILLS BEDBUGS and CRAWLING INSECTS POWDER™ contains Silicon Dioxide material composed of millions of minute, fossilized single-celled aquatic plants known as diatoms which were deposited in the earth's crust millions of years ago. JT EATON™ KILLS BEDBUGS and CRAWLING INSECTS POWDER™ kills insects by abrasively removing and breaking down the oily protective membrane which covers the insects' body, legs, and other moving parts. In 50% of the insects treated, the insect's body is assumed to die. In 95% of the insects treated, the insect's body occurs the next fall. Without water to replace such a loss, the insect will die. JT EATON™ KILLS BEDBUGS and CRAWLING INSECTS POWDER™ there is an initial kill followed by the gradual, steady kill of the remaining insects. It remains effective until depleted and will continue to kill insects as long as the product stays dry!

**HOME and RESIDENTIAL PEST CONTROL.**  
Stake this container/applifier vigorously to fill the product. To apply, open cap and squeeze/puff the product through applicator tip. **INSECTS KILLED BY JT EATON™ KILLS BEDBUGS and CRAWLING INSECTS POWDER™**, when used as directed, includes the following: Ants, Bedbugs, Boxelder bugs, Cockroaches (German, American and Brown banded), Crickets, Garden Spiders (tarantula), Drywood Termites, Fleas, Millipedes, Silverfish, Sowbugs, Ticks. Make sure to only apply to **DRY SPECIFIC AREAS TO APPLY**

Apply behind stoves, refrigerators, under sinks, along baseboards, under the edges of rugs, in cracks and crevices, in window/sill window sills and frame openings, on mattresses for bedbugs, on and beneath dry patches and indoor plants where insects are seen. Product is not for use on wet surfaces. Do not use on wet surfaces. Do not use on those areas with an approved liquid household insecticide. Do not apply to any crawling insects (including cockroaches) indoors, apply lightly to any dry areas where crawling insects are seen, spread or have become a nuisance. For control, insects must crawl into and come in contact with the dry powder.

**FOR ANTS:** Apply along baseboards, entry cracks and crevices and to areas of intensive ant activity such as doors, windows, screens, porches, basements, attics, ant nests (mounds) and ant trails.

**FOR FLEAS:** For control, treat pet quarters, bedding, and indoor kennel areas and pet resting areas under pet couches. Sleeping mattresses in the home may also be treated. Replace any product that becomes wet. Apply monthly or as needed. Do not introduce, or puff, the product into the air.  
**FOR BEDBUGS:** Squeeze container to apply light puffs of the dust to mattress surfaces, tufts and seams. Dismantle and treat bed parts, joints and interior areas. All cracks and crevices in the bedroom should be treated.

## BUSINESS and COMMERCIAL PEST CONTROL

Commercial Transportation Facilities, Food Processing Plant Premises/Equipment, Eating Establishments Food Handling Areas (food contact), Eating Establishment Food Serving Areas (food contact), Food/Grocery Marketing Storage/Distribution Facility Premises. As a crack and crevice treatment apply separately into cracks and crevices using equipment designed to place powder into specific locations. Limit spot treatments to wall or floor surfaces where pests have been seen or where pests are suspected of hiding. No individual spot treatment should exceed 2 sq. ft. All food or feed must be removed or covered before treatment. Treat open spaces below floors, above ceilings, within walls, under stairs, underneath and behind equipment or appliances, around pipes, under sinks, in utility closets and around garbage and waste cans.

## FOR FOOD AREAS

Apply to control the insect pests as listed below as a "Crack and Crevice" or a "Spot" treatment in areas where food or feed is - Packaged, Processed (including enclosed processing systems), Packaged (Bottled, Boxed, Canned, Wrapped), Transported, Stored (including waste), Prepared, or Served.

## FOR NON-FOOD AREAS

Apply (as directed above) as a "Crack and Crevice" or a "Spot" treatment for control of Ants, Boxelder Bugs, Crickets, Roaches and Silverfish to areas where pests hide, run or land, such as attics and spaces above suspended ceilings, basements, and crawl spaces, cracks in baseboards, moldings, and door frames, corners, in closets, cabinets, and shelves, window sills and frames, under and behind furniture and appliances, etc. Work into and apply under rugs, door mats, couches, etc.

## STORAGE AND DISPOSAL

**STORAGE:** Store this product in its original container in a dry, cool, secure area. Do not contaminate water, foodstuffs, feed, or seed by storage or disposal.  
**PESTICIDE DISPOSAL:** As a responsible environmental practice, where possible, it is recommended that all of the contents of the container be used, carefully following label directions and precautions. **PESTICIDE CONTAINER DISPOSAL:** IF PARTIALLY FILLED: Call your local waste agency for disposal instructions. NEVER place unused product down any indoor or outdoor drain. IF EMPTY: Non-refillable container. Do not reuse or refill this container. Place in trash or other recycling if available.  
**SPELL:** In case of spill, if product is dry sweep up and use as directed or dispose of material according to "If Partly Filled" directions above.

**NOTICE:** To the extent consistent with applicable law, buyer and user assume all risk and liability of use, storage and/or handling of this product not in accordance with the terms of this label.

J.T. EATON & CO., INC., 1383 East Highland Road, Tinsburg, OH 44087 • U.S.A.

JT EATON™ and KILLS BEDBUGS and CRAWLING INSECTS POWDER™ are trademarks of J.T. Eaton & Co., Inc. Made and Printed in U.S.A. ©2016

EPA92501S1M/N1025016  
FW20307U/D



7

